

PCORI's Funding Opportunities and Engagement Overview



Mabel Crescioni, DrPH, JD, LLM
Senior Engagement Officer, PPE
October 7, 2025



Overview of Today's Discussion



- PCORI Overview
- PCORI Funding Opportunities
- The PCORI Application Process
- PCORI's Foundational Expectations for Partnerships in Research
- Engagement Resources

Patient-Centered Outcomes Research Institute

Introduction & Overview

Get To Know PCORI®



| PCORI®

- Nonprofit that funds patient-centered comparative clinical effectiveness research (CER)
- Widely acknowledged as a leader in driving U.S. clinical research to become more patient-centered
- Provides funding for CER, engagement in research, dissemination and implementation and research infrastructure projects





Our Mission

Help people make better-informed healthcare decisions, and improve healthcare delivery and outcomes, by producing and promoting high-integrity, evidence-based information that comes from research guided by patients, caregivers, and the broader healthcare community

Multiple Funding Opportunities

| Types of PCORI-Funded Projects

CER Awards

- Fund studies comparing two or more treatments, services or health practices

Dissemination & Implementation Awards

- Fund projects to deliver the evidence to those who can use it

Engagement Awards

- Fund projects to bring more patients, caregivers, clinicians and communities into the health research process



CER Funding Opportunities: Broad and Focused

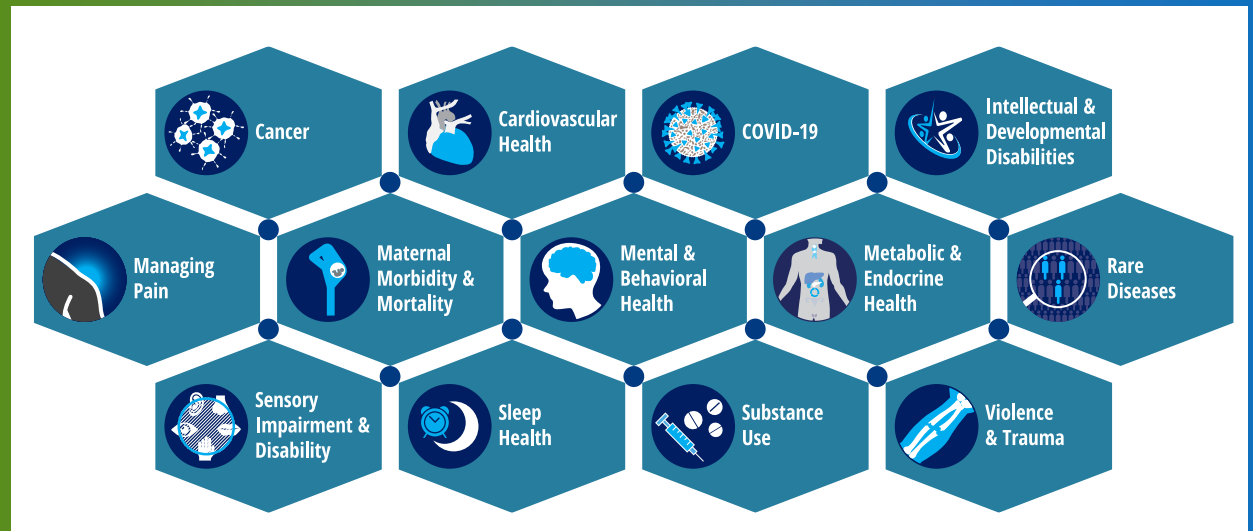
Broad

- Solicits CER proposals on any topic generated by CER community
- Aligned with PCORI's National Priorities for Health

Topic-Focused

- Solicits CER proposals aligned to the Topic Themes
- Emphasize patient-centered needs and creative approaches to close evidence gaps

PCORI'S RESEARCH PROJECT AGENDA TOPIC THEMES



PCORI Funding Opportunities



Research & Engagement

Research Funding Opportunities



Phased Large Awards for Comparative Effectiveness Research

Large, meritorious and innovative studies with some risks

Up to \$22M
(for feasibility and full-scale study phases)

Broad Pragmatic Studies

Studies aligned with at least one of PCORI's three funding categories, including PCORnet® studies

1. Up to \$5M
2. \$5 to 12M
3. Up to \$12M

Topic-Focused

Stakeholder-driven topics, issues and questions of national significance

Variable

Science of Engagement

Development and validation of measures; development and testing of engagement techniques

1. Up to \$1M
2. Up to \$1.5M

Methods

Improve use of AI and ML, improve study design, support data research networks, ethical and human subject protections in CER

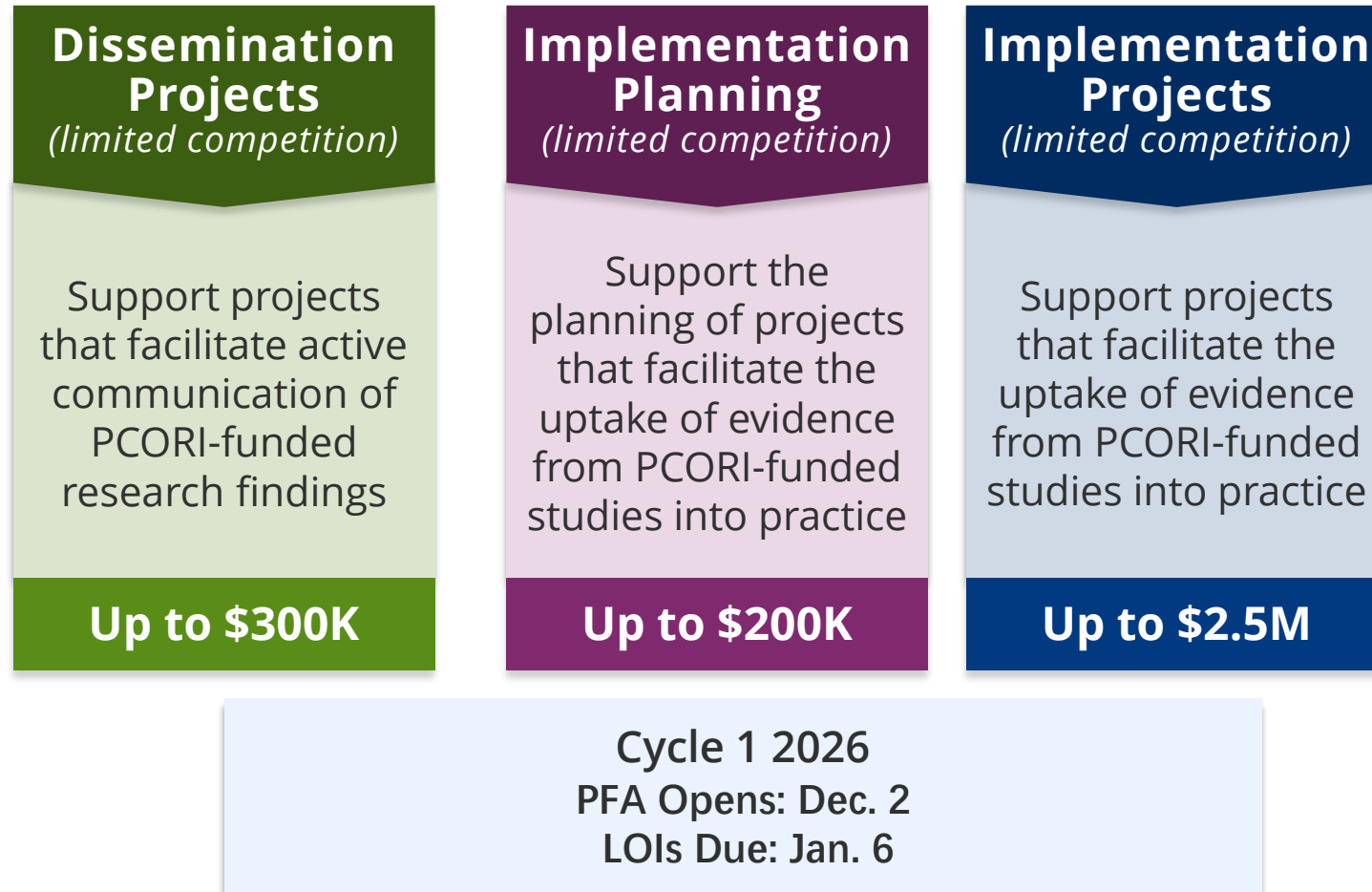
Up to \$750K

2026 Funding Cycle LOI Deadlines

Cycle 1: Jan. 6 | Cycle 2: April 28 | Cycle 3: Sept. 8

*All funds and timeline noted above are subject to change

Dissemination and Implementation of PCORI-Funded Research Findings



*All funds and timeline noted above are subject to change

Engagement Funding Opportunities



*Funding opportunities, funds and timeline noted above are subject to change

Upcoming Topical Funding Opportunities



Partnering Research and Community Organizations for Comparative Clinical Effectiveness Research Across the Cancer Care Continuum

CER projects led by researcher and community partnership

Focus on research questions and decisional dilemmas relevant to the participating communities that address variations in care and outcomes across the cancer continuum

Up to \$12 million *

* Up to \$13 million in direct costs may be considered for studies proposing powered outcomes at or beyond 24 months.

Up to 5 Years **

**Up to six years may be considered for studies proposing powered outcomes at or beyond 24 months

Watch the [PFA Preannouncement Town Hall here!](#)

Upcoming Topical Funding Opportunities



Improving Health Decision Making With Comparative Clinical Effectiveness Research: Retrospective Observational Studies Leveraging Existing Data Sources PCORI Funding Announcement -- Cycle 1 2026

Focus on well-designed, methodologically robust **retrospective observational patient-centered comparative clinical effectiveness research (CER) studies** that will produce timely, impactful and patient-centered results to inform healthcare decision making and improve health outcomes

Up to \$2 million in direct costs

Up to 18 months **

**with peer review activities to occur beyond that duration

Key Dates

PFA Opens: Dec. 2, 2025

Applicant Town Hall: Dec. 10, 2025, 12 pm (ET)

Letter of Intent (LOI) Deadline: Jan. 6, 2026; 5 pm (ET)

Preannouncement

The National Patient-Centered Clinical Research Network - PCORnet®



- National-scale resource to conduct patient-centered CER
- 13,000+ clinical care sites
- 47 million patients with an encounter
- Research ecosystem also well suited to conduct:
 - Real-world evidence studies
 - Pragmatic clinical trials
 - Population health research
 - Health systems research
 - Studies on how best to engage patients in research



PCORI Portfolio

HCSRN Member Focus

Type of Awards Received by HCSRN Members

- **PCORI Funding Mechanisms**

- Engagement Awards
- Broad Research Awards
- Targeted Research Awards
- Science of Engagement
- Dissemination and Implementation
- Infrastructure/PCORNet

- **Project Focus Areas/Populations**

- Asthma Control
- Children & Youth
- Chronic Disease Management
- Mental Health
- Maternal Health

PCORI Application Process





Eligibility To Submit

- Any private sector (nonprofit or for-profit) research organization
- Any public sector research organization (university or college hospital or healthcare system; laboratory or manufacturer; unit of local, state or federal government)
- **Individuals are not permitted to apply**



Letter of Intent (LOI) Requirements



- An LOI is required and must be submitted prior to the deadline.
- To submit an LOI, download the **PFA-specific Letter of Intent Template**.
- You must answer all questions within the specified page limit.
- Do not upload additional documents as part of your LOI. Letters of endorsements or support are not accepted at this stage.
- Only those LOIs deemed most responsive (programmatically and administratively) to this PFA will be invited to submit a full application.

Administrative Resources



[PCORI Cost Principles](#)


[Applicants FAQs](#)

[Glossary](#)

[Standard Contract for Funded Research Project](#)

PCORI's Six Foundational Expectations for Partnerships in Research

What is in the Updated Guidance?

- The updated guidance collectively includes:
 - An updated definition of meaningful engagement
 - 6 Foundational Expectations
 - Information to support the implementation of each expectation 

www.pcori.org/Foundational-Expectations

- **Definition of each expectation** and how the expectation helps the project
- **Questions** to get started
- **Actions** that project teams can take to put each expectation into practice
- **Examples** of how PCORI-funded projects implemented the expectations
- **Links** to other PCORI engagement resources

FOUNDATIONAL EXPECTATIONS FOR PARTNERSHIPS IN RESEARCH



Representative
Involvement



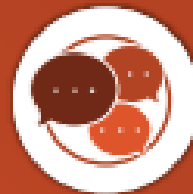
Early & Ongoing
Engagement



Dedicated Funds for
Engagement &
Partner Compensation



Build Capacity To
Work as a Team



Meaningful Inclusion of
Partners in
Decision Making



Ongoing Review &
Assessment of
Engagement



Expectation: Representative Involvement



Representative Involvement

Projects should include partners, organizations, researchers and other team members who reflect the range of patients and communities affected by the research topic.

This expectation helps projects to:

- Make sure the research is relevant to and addresses the needs of those most affected by the research topic.
- Incorporate patient and other partner perspectives in project decisions.
- Create broader representation of relevant perspectives by including a range of patients or communities most affected by the area of focus, interventions and outcomes.



Expectation: Early & Ongoing Engagement



Early & Ongoing Engagement

Projects should ensure that partners contribute early and throughout the study, including planning the study, conducting the study and disseminating study results.

This expectation helps projects to:

- Ensure that every phase of the project benefits from partners' contributions.
- Meet project goals and outcomes.
- Assign roles and activities based on partner preferences, skills, strengths and life circumstances.
- Build on community strengths and assets.



Expectation: Dedicated Funds for Engagement & Partner Compensation



Dedicated Funds for Engagement & Partner Compensation

Projects should dedicate funds to support engaging with partners and compensate partners for their time, expertise and perspectives in a timely manner and in ways that reflect their preferences and roles.

This expectation helps projects to:

- Compensate partners in ways that reflect their needs and preferences, both financially and non-financially, while avoiding unintended consequences like loss of public benefits.
- Support meaningful engagement of partners in all phases of the project.



Expectation: Build Capacity to Work as a Team



Build Capacity to Work as a Team

Projects should identify skills, strengths and barriers to engagement and provide all team members with the information, training and support they need to work as a team.

This expectation helps projects to:

- Meet project goals and outcomes by identifying and building on team members' strengths.
- Address power imbalances between researchers, patients and other partners within the team and create team cohesion.
- Improve productivity of all team members by ensuring that all have the necessary information about the project topics, methods, and activities to contribute effectively.



Expectation: Meaningful Inclusion of Partners in Decision Making



Meaningful Inclusion of Partners in Decision Making

Projects should use engagement structures and processes that include partners in decision making throughout all phases of the project, with considerations for the project's goals, scope and scale.

This expectation helps projects to:

- Ensure partner perspectives influence decisions about study planning and conduct and dissemination of results.
- Acknowledge and address power imbalances between researchers, patient partners, and other partners.
- Promote transparency about decision making and minimize conflicts that may arise among team members.
- Promote meaningful engagement, shared leadership and shared responsibility.



Expectation: Ongoing Review & Assessment of Engagement



Ongoing Review & Assessment of Engagement

Projects should gather input and feedback throughout the project to identify what is working well and what could be improved and then adjust engagement approaches as needed.

This expectation helps projects to:

- Involve all team members in continuous learning to improve the process of engagement.
- Understand the impact of engagement on the project.

When to Use the Foundational Expectations

Teams will be encouraged to address these expectations when:

- Applying for PCORI funding.
- Developing project and engagement plans for awarded projects.
- Reflecting on engagement during a project to improve and strengthen engagement over time.



New to Patient-Centered Outcomes Research?

- Free, self-paced, online training
- Easy to understand modules
- Helps people better understand the healthcare research process and to learn how to get involved in patient-centered CER
- Available in English and Spanish



Scan Now

Engagement Tool and Resource Repository



Searchable Peer-to-Peer Repository

- Explore 400+ engagement-related tools and resources developed and used by PCORI awardees
- Includes toolkits, case studies, training manuals, white papers, tip sheets and more



Scan Now

Engagement in Health Research Literature Explorer

A searchable database of peer-reviewed article citations to help you discover best practices, lessons learned and emerging insights on patient engagement in health research

- Search using filters and keywords
- Find content aligned with PCORI's Foundational Expectations for Engagement
- Download citation lists
- Sign up for notification of quarterly updates



Scan Now

Refine Results:

Engagement Article Type ⓘ	+
Foundational Expectations for Partnerships in Research ⓘ	+
Stakeholder/Partner Type ⓘ	+
Stage of Research ⓘ	+
Impact of Engagement ⓘ	+
Health Condition ⓘ	+
Research Funder ⓘ	+
Journal	+
Year	+

Multi-Stakeholder Research Teams

Tips for Building Effective Multi-Stakeholder Research Teams

Free Resource for:

- Establishing best practices
- Defining roles and responsibilities
- Making effective group decisions
- Planning for collaboration
- Sustaining engagement
- And More!



Scan Now

Get Involved & Stay Connected

Several Ways to Get Involved with PCORI

- Apply to serve on one of PCORI's five Advisory Panels
- Become a Merit Reviewer
- Become a PCORI Ambassador
- Become a Peer Reviewer
- Participate in PCORI Events
- Suggest a Patient-Centered Research Question



Apply or Nominate Someone Today:

- Clinical Effectiveness & Decision Science
- Clinical Trials
- Healthcare Delivery & Disparities Research
- Patient Engagement
- Rare Diseases



Stay Connected

Looking to Stay Current on All Things PCORI?

Sign up to receive our weekly email newsletter and alerts about:

- Funding opportunities
- Results from our funded research
- Webinars, meetings and events
- Our new strategic initiatives and more!

[PCORI.org/Subscribe](https://www.pcori.org/subscribe)



Stay Connected



| Join the Conversation



PCORI



/PCORInstitute



@PCORI



[PCORI.org/Subscribe](https://www.pcori.org/subscribe)

