

Health Care Systems Research Network

NEWSLETTER

2025 Volume 3

**Founders' Award Nominations
Still time to Submit a Nomination for the
Founders' Award**



Background

The HCSRN is proud to announce that it has established the Founders' Award. The award will be bestowed at the 2026 Annual Conference in Dallas, TX, April 21-23, 2026. This award collectively honors, by its name, the original Founders of the HCSRN and recognizes an active or recently retired member who best exemplifies the spirit of those early founders in their service and lasting contribution to the network. The original Founders were visionary, creative,

influential, persistent, committed, and productive in their efforts to establish what has become a wonderful lasting legacy of a network in which we all participate and from which we benefit. Each HCSRN Governing Board Member will have one vote to cast for their selection of the award winner. Travel expenses and meeting registration will be provided to the winner.

Criteria

Nominees for this award should exemplify the following characteristics:

- The vision and confidence to create something new or unique in embedded healthcare research.
 - The spirit of fostering collegiality and collaboration across partner organizations, which remains among the most important values of the network.
 - The persuasive expertise and determination to create a legacy of funded platforms or other valuable resources for conducting productive research in the HCSRN.
-

Timeline

- **September 29 - Award applications due**
- **October 27 - Winner notified**

HCSRN 2026 Annual Conference Call for Abstracts and Panel Presentations

Call for submissions! The [Abstract and Panel Presentation Submission](#) sites for the Health Care Systems Research Network (HCSRN) 2026 Conference are now open. The deadline for submitting is **Monday, December 8, 2025 11:59:59 PM ET**. The annual conference showcases scientific findings from learning health systems research projects. Be sure to visit www.hcsrn.org for the latest information and updates.

Registration is Open for HCSRN's Annual Conference in Dallas April 21-23, 2026

The HCSRN 2026 Annual Conference will take place at the
Sheraton Dallas Hotel
400 Olive St
Dallas, TX 75201

[Click Here to Register Now!](#)

Registration Questions / Assistance
Phone: (518) 694-4420
Email: admin@hcsrn.org



HCSRN Governing Board Transition



HCSRN is pleased to welcome **Jennifer McClure, PhD** as the representative for Kaiser Permanente Center for Health Research. Dr. McClure is a clinical psychologist and behavioral scientist with over 30 years of experience in healthcare and conducting health services research across a variety of medical environments including academic medical settings, the Veterans Administration, and integrated delivery systems (Group Health Cooperative, Kaiser Permanente (KP)

Washington, and KP Northwest).

Dr. McClure currently serves as Vice President for Health Research in KP Northwest. She is also Director for the KPNW Center for Health Research (CHR) and is a Distinguished Investigator at CHR. In addition, she is a Professor of Health Systems Science with the KP School of Medicine, an Affiliate Professor with the University of Washington School of Public Health, an Affiliate Professor with the Fred Hutchinson Cancer Center, and an Affiliate Investigator with the KP Washington Health Research Institute.

Dr. McClure's research has been continuously funded by the National Institutes of Health for more than 30 years. In recognition of her scientific contributions, she was awarded Fellow status with both the Society of Behavioral Medicine and Society for Research on Nicotine & Tobacco. Dr. McClure is currently serving her second elected term as Treasurer and Board member of the Society for Research in Nicotine & Tobacco. She previously served as Associate Editor of *Nicotine & Tobacco Research*.

Dr. McClure represents KPNW on the KP National Research Council.

The Governing Board gratefully acknowledges the many contributions of **Steve Fortmann, MD**, Kaiser Permanente Center for Health Research and wishes him well in his retirement.

Meet the HCSRN Governing Board Members

Robert Greenlee, PhD, MPH is an epidemiologist and tenured senior scientist at Marshfield Clinic Research Institute (MCRI) with research expertise in the detection, diagnosis,



care, and outcomes of cancer and other chronic conditions. He has 25 years of experience at MCRI in clinical epidemiology and population health research and is an adjunct Professor in the Department of Population Health Sciences at the University of Wisconsin (UW) School of Medicine and Public Health, where he also serves as the co-lead for the Community and Collaboration Module for UW's Institute for Clinical and Translational Research. He has been on the Governing Board for the Health Care Systems Research Network (HCSRN) for 20 years (15 as MCRI site representative, 5 as MCRI alternate), serving as Governing Board

Chair (2021-2022) and recently completing in 2025 a 7-year stint on the Executive Committee. Over time he has been a site Principal Investigator (PI) in the National Cancer Institute (NCI)-sponsored Cancer Research Network, the NHLBI-funded Cardiovascular Research Network, and the FDA's Sentinel medical product safety initiative.

Following receipt of an MPH in epidemiology from the University of Michigan, Bob worked for 5 years as a county epidemiologist in local public health departments in western Michigan, attending primarily to infectious disease surveillance and outbreak investigation. His subsequent doctoral training in epidemiology at Emory University was focused on cancer surveillance research and particularly on screening and early detection. He worked for two years as Program Director for Cancer Surveillance Research at the American Cancer Society's National Office in Atlanta before joining MCRI. At MCRI, he was a co-investigator and later a site PI for Marshfield Clinic in the NCI-sponsored Prostate, Lung, Colorectal, and Ovarian Cancer Screening Trial and in the related National Lung Screening Trial. He has also been the Cancer Care Delivery Research Lead for the NCI-sponsored Wisconsin National Community Oncology Research Program (WiNCORP). Currently he is a site PI for NCI's Connect for Cancer Prevention Study and serves as co-lead of the Connect Executive Committee for 2025. He has been a co-PI or a site PI on numerous other federally funded multisite research projects on health and care delivery within health systems.

Bob lives in Wisconsin with his wife Joanne, a retired social worker, and their two standard poodles. Their two adult daughters both live in the Chicago area (one a school psychologist and one an editor for a television broadcast company.) They all look forward to opportunities to get the family together when they can, whether in Marshfield, in Chicago, or on family travel.

Upcoming Webinars

Tuesday, October 7 4:00 - 5:00 PM ET

PCORI Foundational Expectations for Partnerships in Research
Mabel Crescioni, Senior Engagement Officer, PCORI

This presentation will include an introduction and overview of PCORI's portfolio

relevant to HCSRN members, funding opportunities across research and engagement awards with an emphasis on PCORI's Engagement Awards program and the updated [Foundational Expectations for Partnerships in Research](#), and the application process.

Thursday, October 30 4:00 - 5:00 PM ET

**Navigating the Future of Research:
Strategic Adaptations for Funding**
Annual Conference Encore Presentation

As part of the HCSRN Annual Conference in St Louis, a panel was held addressing the current challenges in the Federal funding environment.

Given interest in this topic and the ongoing relevance, the same panelists will be again be sharing their expertise.

The panelists will focus on:

Gaining efficiencies in research in anticipation of a lower indirect cost cap

- Pivoting research portfolios to better align with priorities of the current administration
- Balancing convictions with the need to produce rigorous, high integrity, ethical research

Additional / alternative sources of funding to support current portfolios of research

Speakers:

Jerry Gurwitz, MD, Dr. Meyers Professor in Primary Care Medicine, Division of Health Systems Science, UMass Chan Medical School

Rebecca Rossom, MD, MS, Geriatric Psychiatrist, Senior Research Investigator, Health Partners Institute

Greg Simon, MD, MPH, Senior Investigator, Kaiser Permanente Washington Health Research Institute

Professor, Department of Health Systems Science, Kaiser Permanente Bernard J. Tyson School of Medicine, Research Professor, Psychiatry and Behavioral Sciences, University of Washington

Moderator: Claudia Steiner, MD, MPH, Executive Director of the Institute for Health Research

Tuesday, November 11 4:00- 5:00 PM

**Blood Pressure Outcomes after Sodium–Glucose
Cotransporter 2 Inhibitors vs. Other Diabetes
Medication Use in Adults with Type 2 Diabetes**

Jaejin An, PhD

Get Involved: Sign Up for a Scientific Interest or Work Group!

HCSRN has four new Scientific Interest Groups in development in addition to the six established groups. Now is the time to get involved. Sign up to be added the group roster and receive information on meetings and upcoming activities.

Click [here](#) to be added to the Cancer SIG roster.

Click [here](#) to be added to the Infectious Diseases SIG roster.

Click [here](#) to be added to the Primary Care SIG roster.

Click [here](#) to be added to the AI in Health Care SIG roster

Aging Scientific Interest Group provides a forum to promote aging research and connect researchers interested in related topics (e.g., healthier aging, lifestyle interventions, cognitive function, neurodegenerative disease, technologies, frailty/falls, use of prescriptions, and caregiving issues).

Click [here](#) to be added to the Aging SIG roster.

Institutional Review Board Work Group is a consortium of IRB, HRPP, and Research Compliance professionals that meet every other month. This work group meets to collaborate, share best practices, and works to streamline and improve the IRB review process for collaborative HCSRN research.

Click [here](#) to be added to the IRB Work Group roster.

Patient Engagement in Research (PER) Scientific Interest Group helps member research organizations build infrastructure for patient engagement in research, and to develop generalizable tools to enhance engagement efforts. Meets annually at the HCSRN conference and quarterly via teleconference.

Click [here](#) to be added to the PER SIG roster.

Pharmacy Scientific Interest Group brings together HCSRN members and invited nonmembers to explore topics and collaborate on subjects related to pharmacy services and the continuum of the medication use process from discovery to disposal within healthcare delivery. This IG is open to HCSRN members and invited non-members.

Click [here](#) to be added to the Pharmacy SIG roster.

Research Administrators Work Group is dedicated to sharing best practices and improving efficiency in research administration including grant

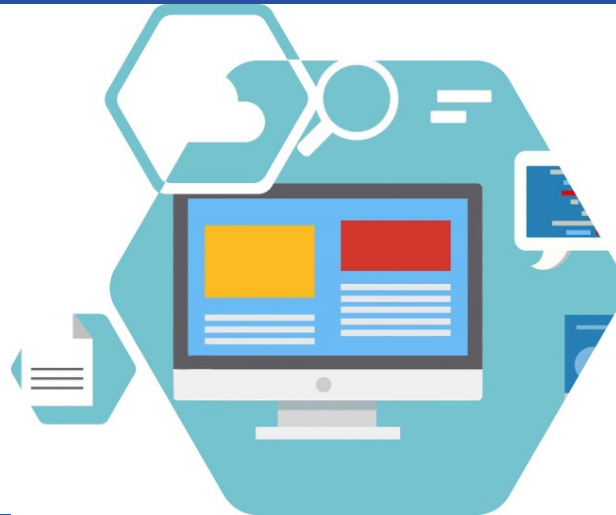
management, compliance with funding regulations, budget oversight, and coordination between researchers and external agencies.

Click [here](#) to be added to the Research Administrators Work Group roster.

Research Project Management Work Group brings together HCSRN members and nonmembers to explore effective and efficient project management strategies and other related topics for those who conduct research within health care systems, academic and other settings

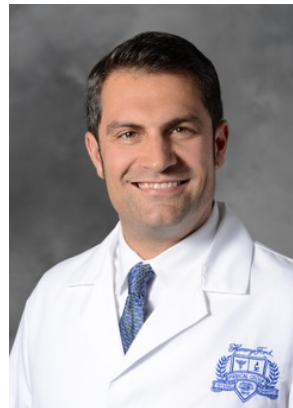
Click [here](#) to be added to the Research Project Management Work Group roster.

Scientific Data Resources Forum Recap



Zero Suicide Model Implementation and Suicide Attempt Rates in Outpatient Mental Health Care August 12, 2025

[View Webinar](#)



Brian Ahmedani, PhD, LMSW
Director of the Center for Health Policy
and Health Services

Featured in the recent August Webinar, a team of HCSRN researchers, led by Dr. Brian Ahmedani from Henry Ford Health, recently conducted a large-scale study examining implementation of the Zero Suicide Model across six health systems, including Henry Ford Health and five regions of Kaiser Permanente (Colorado, Northern California, Northwest, Southern California, and Washington). Suicide is one of the leading causes of death in the United States with nearly 50,000 people dying each year. Annual suicide rates are 25% higher than two decades ago. Prior HCSRN research conducted through the Mental Health Research Network found that most people make healthcare visits in the weeks and months before suicide. It is clear that healthcare systems are important for prevention. However, there have been very few examples of successful approaches for suicide prevention within health systems. The Zero Suicide Model has been gaining traction in health systems. Henry Ford Health pioneered this Model in 2001 and found a near 80% reduction in their annual suicide rate sustained for more than 2 decades. While many health systems have begun implementing principles of this approach, there have not been any population-level studies conducted to determine whether the approach works in other systems. The NIMH-funded Zero Suicide Implementation Study was designed to fill this gap.

In the Zero Suicide Implementation Study, the six participating health systems all committed to implementing Zero Suicide within their health systems. Each health system chose how they wanted to implement the approach at the local level, so no two systems were exactly the same. The research teams worked closely with clinical leaders to co-design a set of measures aligning with unique and common implementation approaches. Then, research teams used the HCSRN VDW, including health records, claims, and mortality data, to collect data for each of the chosen process and outcome measures from 2012-2019. Research teams reviewed findings with clinical stakeholders to inform real world quality improvement, and then conducted analysis for publication. The Webinar featured outcomes from a recent paper in JAMA Network Open, which showed that implementation of the Zero Suicide Model in outpatient behavioral health settings was associated with reductions in suicide attempts at the population level. This landmark study provided important national information to support ongoing implementation of the Zero Suicide Model across the United States.”

How to Assess Literature: A Skeptic's Guide

March 11, 2025

[View Webinar](#)



Michael Glick, DMD
Fields-Raynat Professor and Executive Director
Center for Integrative Global Oral Health
School of Dental Medicine, University of Pennsylvania

Assessing Biomedical Literature: A Skeptic's Guide to Critical Appraisal

In an era of rapidly expanding biomedical research, the ability to critically appraise published literature is more crucial than ever. Dr. Michael Glick's presentation "A Skeptic's Guide" highlighted the persistent challenges that necessitate a discerning approach, including fraud, flawed methodologies, and data misinterpretation.

Key Challenges and Interpretive Pitfalls:

The sheer volume of new evidence, from clinical trials to systematic reviews and meta-analyses, underscores the need for clinicians to effectively interpret research. However, common errors often impede accurate understanding. These include conflating statistical significance with actual clinical relevance, misapplying causal language where only association exists, and failing to distinguish between relative and absolute risks.

While clinical guidelines offer valuable direction, their utility can be undermined by inherent biases, conflicts of interest, or methodological weaknesses. Glick emphasizes that such guidelines should serve as informative tools, not rigid dictates, allowing clinicians to exercise informed judgment.

A growing concern is the integrity of scientific evidence itself, threatened by increasing retractions due to misconduct, errors, and unethical publishing practices like predatory journals and "paper mills" that prioritize profit over scientific rigor.

Practical Recommendations for Clinicians:

To navigate this complex landscape, Glick offers several practical recommendations:

- **Maintain a Skeptical Stance:** Approach all published results with a healthy degree of skepticism.
- **Systematic Evaluation:** Develop and apply a systematic and critical framework for evaluating research.
- **Understand Limitations:** Always consider the inherent limitations and specific context of any evidence.
- **Vet Sources Carefully:** Be vigilant against predatory publishers and rigorously assess the credibility of research sources.
- **Continuous Learning:** Recognize the limits of your own knowledge and commit to continuously updating your clinical practice based on sound, critically appraised evidence.

By adopting these principles, clinicians can better ensure that their practice is informed by robust and reliable scientific evidence, ultimately benefiting patient care.



Want a rewarding job in health research? Check out the [HCSRN Job Board](http://www.hcsrn.org/en/JOBS/) to browse career opportunities. We list faculty and staff positions at HCSRN research centers and academic institutions as a service to the research community.

Spread the Word!

Be sure to forward this email to share the latest from HCSRN with you peers and colleagues!

Share this Link with Your Colleagues to Receive the Latest HCSRN Information

Keeping the HCSRN communication list current is an ongoing task. We don't always know when new people join our member institutions and others leave. Please share this [link](#) with people in your organization who should know about the latest HCSRN happenings. Whether it's conference updates, information about the next SDRF presentation, Governing Board news or job postings, the best way to stay up to date, is by completing the link above.





Try email marketing for free today!